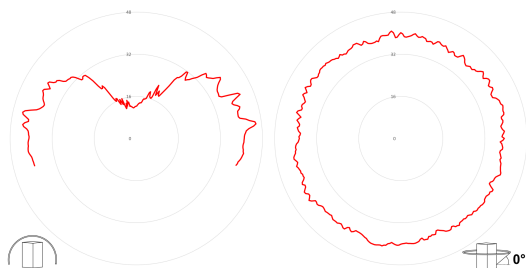
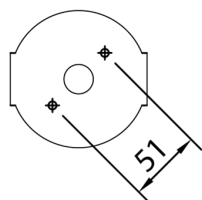
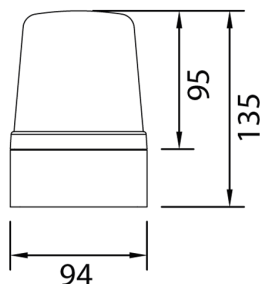


Series B Obstruction Warning Beacon Type B

SBB/DC/24-48/LED-TYPE-B/RED + IR



deegree SBB IP66 Aviation Beacon Type B IR 24-48Vdc White Base 135mm x 94mm dia. Red

SBB/*/*LED-Type-B/Red complies with ICAO Annex 14 Chapter 6 regulations for low-intensity Type B, fixed obstacle lights. Units with Infra-Red (IR) are also compliant with the IR requirements for low intensity obstruction lights outlined by the Finnish Transport and communications agency.

Being a 360 degree viewing enclosure, the SBB Type-B uses different LEDs from the larger SBG Type-B product, offering a higher light intensity per LED, and meaning that the required brightness levels are met within the much smaller series B enclosure.

Series B is an IP66 rated enclosure, pre-moulded with drill-outs for M10 and M20 cable gland entries. The lens fits with a specially designed O-ring and tightens on a bayonet-style fitting, securing with an anti-tamper screw into a blind hole.

Carefully designed to minimise dust and dirt build-up, and fully water-tight, Series B is perfectly suited to the outdoor environment, and with long-life LEDs, makes maintenance a thing of the past.

- Meets ICAO Annex 14, Chapter 6 requirements for Low Intensity Obstruction Warning Type B (>32Cd)
- Includes additional Infra-Red (IR) LEDs so that beacon can be detected by night-vision equipment
- Continuously rated
- 360° light output around the vertical axis

Electrical Data

Nominal Supply Voltage (V)	24-48
Supply Type	DC
Voltage Min (V)	20
Voltage Max (V)	55
Nominal Current Draw (A)	0.26@24V 0.136@48V
Fuse (A)	1
Fuse Type	TD
Fuse (Internal or External)	Internal

Visual Data

Signal Colour	Red
Light Source	LED
Luminous Intensity (cd)	>36

General Data

Series B Obstruction Warning Beacon Type B

SBB/DC/24-48/LED-TYPE-B/RED + IR



Size (mm)	135 x 94 dia.
-----------	---------------

Weight (kg)	0.24
-------------	------

IP Rating	IP66
-----------	------

Mounting method	Surface mounting
-----------------	------------------

Order Unit	1
------------	---

Base Colour	White
-------------	-------

Lens Colour	Clear
-------------	-------

Trade Data

GTIN	5060995744766
------	---------------

Commodity Code	85319000
----------------	----------

Country of origin	GB
-------------------	----